



HAVE you heard?

JOY is essential.

LAUGHTER is essential.

ESCAPE is essential.

INSPIRATION is essential.

THEATRE is essential.

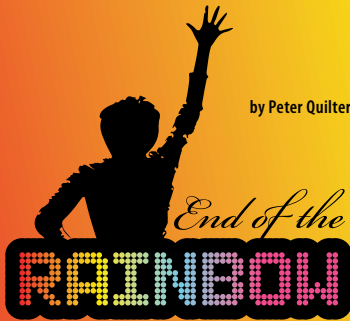
alt is essential.

2023-2024
SEASON

alt is essential.

2023-2024
SEASON

AMARILLO LITTLE THEATRE'S
NINETY-SIXTH YEAR



by Peter Quilter



August 17 - 27, 2023

***End of the Rainbow* – Contemporary Drama with Music**

A play with music about the final years in the life of Judy Garland. ***End of the Rainbow*** is a savagely funny drama featuring a glorious ensemble of Judy Garland hits and infused with the glamour and the melancholy of stardom. This knockout portrait of a living catastrophe will captivate Adventure Space audiences this Fall. **Rated R** for language and content



music by Marc Shaiman, book by David Grieg,
lyrics by Marc Shaiman and Scott Wittman



September 7 - 24, 2023

***Charlie and the Chocolate Factory* – Musical**

Got a sweet tooth? You're in luck: Willy Wonka's in town and your kids are going to eat him right up. Based on the famous novel by Roald Dahl, ***Charlie and the Chocolate Factory*** features a new original score as well as some familiar favorites. The story is a marvelous family-friendly romp with a little dark humor blended into the recipe. In collaboration with our Academy, ALT will delight audiences with a world of "Pure Imagination" on our Mainstage this September! **Rated PG**



by Lauren Wilson



October 19 - 29, 2023

***Chemical Imbalance: A Jekyll and Hyde Play* – Dark Comedy**

Dr. Jekyll's research finds him – as usual – investigating the split between good and evil in the human psyche. Of course, things get out of hand when he decides being evil might be more fun! This hilarious spoof of the classic story by Robert Louis Stevenson will have audiences in stitches! ***Chemical Imbalance*** is a fast-paced romp about walking the tightrope between aristocracy and depravity, and the two worlds of good and evil. This comedic retelling of the classic, dark tale will send shivers of both fear and laughter rattling down anyone's spine. **Rated PG**



November 9-19, 2023

***The Boys in the Band* – Drama**

Centered on a group of gay men, ***The Boys in the Band*** tells the story of close friends who gather in an NYC apartment for a birthday party. When a game of "Truth" goes

IN THE BAND

by Mart Crowley



terribly wrong, the evening slowly exposes the fault lines beneath their friendships and the heartache that threatens their solidarity. This Tony Award winning play is perfect for our Adventure Space audiences and should not be missed!

Rated R for language and content.

THE PLAY THAT GOES WRONG

by Jonathan Sayer, Henry Lewis, Henry Shields



January 11-21, 2024

The Play That Goes Wrong – Comedic Mystery

“Break a leg!” takes on a whole new meaning for this woefully misguided troupe of players. It’s opening night for a 1920s-style murder mystery but when the curtain goes up, the performance quickly goes from bad to utterly disastrous. With an unconscious leading lady, a corpse that can’t play dead and actors who trip over everything (including their lines), *The Play That Goes Wrong* is an unforgettable evening of laughter. **Rated PG**



by Jonathan Larson



February 15-25, 2024

Rent – Rock Musical

This 1996 Tony Award winner for Best Musical is based on Puccini’s beloved opera *La Bohème*. *Rent* follows the ups and downs of a year in the life of a group of impoverished, artistic friends living in Manhattan’s East Village. The group’s dreams, losses and love stories weave through the musical’s narration to paint a stunningly raw and emotional portrait of the gritty bohemian world of New York City in the late 1980s. *Rent* will have our audiences at the Adventure space declaring, “No Day But Today!” **Rated R** for language and content.



by Kate Hamill



April 11- 21, 2024

Jane Austen’s Sense and Sensibility – Modern Classic

A playful new adaptation of Jane Austen’s beloved novel has a fresh female voice and follows the fortunes (and misfortunes) of the Dashwood sisters. Their lives are turned upside down when their father passes away suddenly, leaving them penniless and with reputations at stake. Together they must learn to mix sense with sensibility to find happiness in a society where love is ruled by money. Filled with humor, emotional depth and bold theatricality, this modern adaptation of the gossipy 18th century classic is a must see for all audiences. **Rated PG**



Book and Lyrics by Eric Idle
Music by John Du Prez



May 2-19, 2024

Monty Python’s Spamalot – Musical Comedy

Lovingly ripped from the classic film comedy *Monty Python and the Holy Grail*, *Monty Python’s Spamalot* retells the legend of King Arthur and his Knights of the Round table and features a bevy of beautiful show girls, cows, killer rabbits and French people. The 2005 Broadway production won three Tony Awards, including Best Musical! The outrageous, uproarious and gloriously entertaining story of King Arthur and the Lady of the Lake will delight audiences as they search for the Holy grail and “always look on the bright side of life!” **Rated PG-13**



M A Y 2 0 2 3

SUNDAY	MONDAY	TUESDAY	WEDNESDAY	THURSDAY	FRIDAY	SATURDAY
	1	2	3	4 BEAUTIFUL 7:30 PM	5 BEAUTIFUL 8:00 PM CINCO de MAYO	6 BEAUTIFUL 8:00 PM
7	8	9	10	11 BEAUTIFUL 7:30 PM	12 BEAUTIFUL 8:00 PM	13 BEAUTIFUL 8:00 PM
14 BEAUTIFUL 2:30 PM MOTHER'S DAY	15 SUMMER CLASS & CAMP REGISTRATION BEGINS	16	17	18 BEAUTIFUL 7:30 PM	19 BEAUTIFUL 8:00 PM	20 BEAUTIFUL 8:00 PM ACADEMY CLASSES END
21 BEAUTIFUL 2:30 PM	22	23	24	25 ACADEMY GHOST LIGHT GALA alt main stage	26 AISD ENDS	27
28	29 MEMORIAL DAY	30	31			

FOR TICKET INFORMATION, CALL OUR BOX OFFICE: 806.355.9991
OR GO TO www.amarillolittletheatre.org



DANCE RECITALS

alt ★
main
stage

J U N E 2 0 2 3

SUNDAY

MONDAY

TUESDAY

WEDNESDAY

THURSDAY

FRIDAY

SATURDAY

1

DANCE RECITALS



2

DANCE RECITALS



3

DANCE RECITALS



4

5

6

7

8

9

10

ALT CELEBRATION
8:00 PM



STORIES TO STAGE CAMP 1 — JUNE 5-9 — 9:00am-2:00pm

11

12

13

14



FLAG DAY

15

16

17

STORIES TO STAGE CAMP 2 — JUNE 12-16 — 9:00am-2:00pm

18

FATHER'S DAY

19

20

21

22

23

24

CAMP BROADWAY MUSICAL CAMP (Weekdays Only) — JUNE 20-29 — 9:00am-3:00pm

25

26

Puffs
BOX OFFICE OPENS:
MEMBERS

27

28

29

30

(Weekdays only, Tues.-Fri. first week, Mon.-Thurs. second week) — JUNE 20-29 — 9:00am-3:00pm

Comp. DANCE CAMP: Int. — ADVANCED ELITE — JUNE 26-29 — 10:00am-2:00pm

FOR TICKET INFORMATION, CALL OUR BOX OFFICE: 806.355.9991

OR GO TO www.amarillolittletheatre.org



alt

Cinderella @ ALT - 2023

...the place
to be!





J U L Y 2 0 2 3

SUNDAY

MONDAY

TUESDAY

WEDNESDAY

THURSDAY

FRIDAY

SATURDAY

1

2

3

Puffs
BOX OFFICE OPENS:
PUBLIC

4

INDEPENDENCE DAY

5

6

7

8

9

10

11

12

13

PUFFS
7:30 PM

14

PUFFS
7:30 PM

15

PUFFS
2:30 PM
7:30 PM

16
PUFFS
2:30 PM

17

18

19

20

21

22

Comp. DANCE CAMP: PETITE-PRELIMINARY — JULY 17-20 — 10:00am-2:00pm

CURTAIN UP CAMP (Weekdays Only) — JULY 18-27 — 10:00am-3:00pm

23

24

25

26

27

28

29

BALLET INT. DANCE CAMP: PREP. FOR Pre-POINTE/POINTE & LYRICAL — JULY 24-27 — 10:00am-2:00pm

(Weekdays only, Tues.-Fri. first week, Mon.-Thurs. second week) — JULY 18-27 — 10:00am-3:00pm

30

31

DANCING DOLL DANCE CAMP

End of the Rainbow
BOX OFFICE OPENS:
MEMBERS

FOR TICKET INFORMATION, CALL OUR BOX OFFICE: **806.355.9991**

OR GO TO **www.amarillolittletheatre.org**

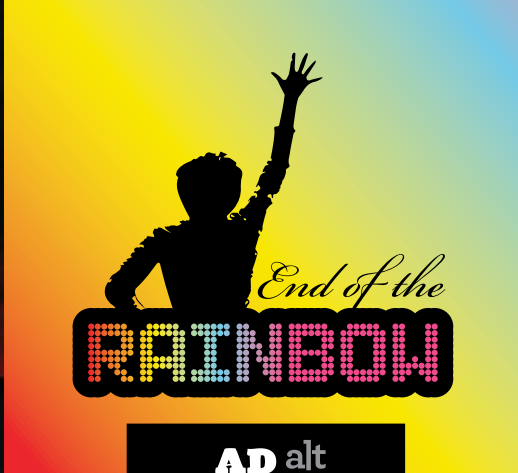


alt

Guys and Dolls @ ALT - 2022

...the place
to be!





AUGUST 2023

SUNDAY	MONDAY	TUESDAY	WEDNESDAY	THURSDAY	FRIDAY	SATURDAY
		1	2	3	4	5
MY DANCING DOLL DANCE CAMP — JULY 31-AUGUST 4 — 10:00am-1:00pm						
6	7 <i>End of the Rainbow</i> BOX OFFICE OPENS: PUBLIC	8	9	10	11	12
COMP. DANCE CAMP: ADV. ELITE INTENSIVE — AUGUST 7-11 — 10:00am-3:00pm						
13	14 ACADEMY REGISTRATION BEGINS	15 AISD BEGINS	16	17 END OF THE RAINBOW 7:30 PM	18 END OF THE RAINBOW 8:00 PM	19 END OF THE RAINBOW 8:00 PM
20 END OF THE RAINBOW 2:30 PM	21 <i>Charlie and the Chocolate Factory</i> BOX OFFICE OPENS: MEMBERS	22	23	24 END OF THE RAINBOW 7:30 PM	25 END OF THE RAINBOW 8:00 PM	26 END OF THE RAINBOW 8:00 PM
27 END OF THE RAINBOW 2:30 PM	28 ALT ACADEMY CLASSES BEGIN <i>Charlie and the Chocolate Factory</i> BOX OFFICE OPENS: PUBLIC	29	30	31		

FOR TICKET INFORMATION, CALL OUR BOX OFFICE: 806.355.9991
OR GO TO www.amarillolittletheatre.org



alt
...the place
to be!

Significant Other @ ALT - 2022





S E P T E M B E R 2 0 2 3

SUNDAY

MONDAY

TUESDAY

WEDNESDAY

THURSDAY

FRIDAY

SATURDAY

1

2

3

4

LABOR DAY
ALSD HOLIDAY

5

6

7
CHARLIE AND THE
CHOCOLATE FACTORY
7:30 PM

8
CHARLIE AND THE
CHOCOLATE FACTORY
8:00 PM

9
CHARLIE AND THE
CHOCOLATE FACTORY
8:00 PM

10

11

12

13

14
CHARLIE AND THE
CHOCOLATE FACTORY
7:30 PM

15
CHARLIE AND THE
CHOCOLATE FACTORY
8:00 PM

16
CHARLIE AND THE
CHOCOLATE FACTORY
2:30 PM
8:00 PM

17
CHARLIE AND THE
CHOCOLATE FACTORY
2:30 PM

18

19

20

21
CHARLIE AND THE
CHOCOLATE FACTORY
7:30 PM

22
CHARLIE AND THE
CHOCOLATE FACTORY
8:00 PM

23
CHARLIE AND THE
CHOCOLATE FACTORY
8:00 PM

24
CHARLIE AND THE
CHOCOLATE FACTORY
2:30 PM

25

26

27

28

29

30

FOR TICKET INFORMATION, CALL OUR BOX OFFICE: 806.355.9991
OR GO TO www.amarillolittletheatre.org

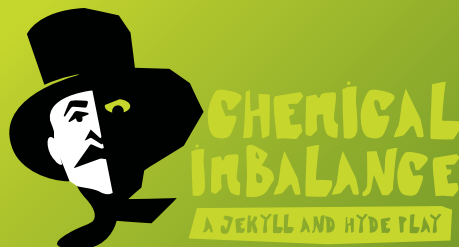


alt

If/Then @ ALT - 2023

...the place
to be!





alt
main
stage

O C T O B E R 2 0 2 3

SUNDAY

MONDAY

TUESDAY

WEDNESDAY

THURSDAY

FRIDAY

SATURDAY

1

2

Chemical Imbalance
BOX OFFICE OPENS:
MEMBERS

3

4

5

6

AISS HOLIDAY

7

8

9

COLUMBUS DAY
AISS HOLIDAY

10

11

12

13

14

Chemical Imbalance
BOX OFFICE OPENS:
PUBLIC

15

16

17

18

19
CHEMICAL IMBALANCE:
A JEKYLL AND HYDE PLAY
7:30 PM

20
CHEMICAL IMBALANCE:
A JEKYLL AND HYDE PLAY
8:00 PM

21
CHEMICAL IMBALANCE:
A JEKYLL AND HYDE PLAY
8:00 PM

22
CHEMICAL IMBALANCE:
A JEKYLL AND HYDE PLAY
2:30 PM

23

The Boys in the Band
BOX OFFICE OPENS:
MEMBERS

24

25

26
CHEMICAL IMBALANCE:
A JEKYLL AND HYDE PLAY
7:30 PM

27
CHEMICAL IMBALANCE:
A JEKYLL AND HYDE PLAY
8:00 PM

28
CHEMICAL IMBALANCE:
A JEKYLL AND HYDE PLAY
8:00 PM

29

CHEMICAL IMBALANCE:
A JEKYLL AND HYDE PLAY
2:30 PM

30

The Boys in the Band
BOX OFFICE OPENS:
PUBLIC

31

HALLOWEEN

FOR TICKET INFORMATION, CALL OUR BOX OFFICE: 806.355.9991

OR GO TO www.amarillolittletheatre.org



alt

Clybourne Park @ ALT - 2022

**...the place
to be!**





THE BOYS IN THE BAND

AD alt
VEN space
TURE

N O V E M B E R 2 0 2 3

SUNDAY

MONDAY

TUESDAY

WEDNESDAY

THURSDAY

FRIDAY

SATURDAY

1

2

3

4

5

DAYLIGHT SAVING
TIME ENDS

6

7

ELECTION DAY

8

9

THE BOYS IN THE BAND
7:30 PM

10

THE BOYS IN THE BAND
8:00 PM

11

THE BOYS IN THE BAND
8:00 PM

VETERAN'S DAY

12

THE BOYS IN THE BAND
2:30 PM

13

Academy #2
BOX OFFICE OPENS:
MEMBERS

14

15

16

THE BOYS IN THE BAND
7:30 PM

17

THE BOYS IN THE BAND
8:00 PM

18

THE BOYS IN THE BAND
8:00 PM

19

THE BOYS IN THE BAND
2:30 PM

20

Academy #2
BOX OFFICE OPENS:
PUBLIC

21

22

ALSO HOLIDAY

23

THANKSGIVING DAY

24

ALSO HOLIDAY

25

26

27

ALT ACADEMY
PRE-REGISTRATION BEGINS

28

29

30

FOR TICKET INFORMATION, CALL OUR BOX OFFICE: **806.355.9991**

OR GO TO **www.amarillolittletheatre.org**





Training for the Future

The **ALT Academy program** offers **comprehensive training** in the disciplines of **theatre, dance** and **voice** to hundreds of children and adults in our community.

ALT's Dance Academy offers instruction in **ballet, tap, jazz, hip-hop**, and **musical theatre** to students ranging in age from three to adult. Classes are taught in two state-of-the-art dance studios housed within the ALT Mainstage facility. Over 450 students participate in the dance academy program each semester.

The **Theatre Academy** offers instruction in **acting, vocal performance, make-up**, and **playwriting** to almost 250 students each semester ranging in age from four to adult. ALT theatre students also have the opportunity to participate in three Academy productions each year. These productions are supported by ALT's staff and all of the technical resources available to ALT.

The ALT Academy operates under the guidance of our Academy Director and instructors trained in a wide range of theatre, music and dance disciplines.



For more information contact ALT Box Office

info@amarillolittletheatre.org
or call 806.355.9991



alt
...the place
to be!

Elf @ ALT - 2022





#2

alt ★
main
stage

D E C E M B E R 2 0 2 3

SUNDAY

MONDAY

TUESDAY

WEDNESDAY

THURSDAY

FRIDAY

SATURDAY

					1 ACADEMY #2 7:30 PM	2 ACADEMY #2 2:30 PM 7:30 PM
3 ACADEMY #2 2:30 PM	4 ALT ACADEMY REGULAR REGISTRATION BEGINS	5	6	7	8 ACADEMY #2 7:30 PM	9 ACADEMY #2 2:30 PM 7:30 PM ACADEMY CLASSES END
10 ACADEMY #2 2:30 PM	11	12	13	14	15	16
17	18 AISD WINTER BREAK BEGINS	19	20	21	22	23
24 CHRISTMAS EVE	25 CHRISTMAS DAY	26 <i>The Play That Goes Wrong</i> BOX OFFICE OPENS: MEMBERS	27	28	29	30
31 NEW YEAR'S EVE						

FOR TICKET INFORMATION, CALL OUR BOX OFFICE: **806.355.9991**
OR GO TO **www.amarillolittletheatre.org**



Clue @ ALT - 2023





THE PLAY THAT GOES WRONG

alt ★
main
stage

J A N U A R Y 2 0 2 4

SUNDAY

MONDAY

TUESDAY

WEDNESDAY

THURSDAY

FRIDAY

SATURDAY

1
NEW YEAR'S DAY

2
*The Play That
Goes Wrong*
BOX OFFICE OPENS:
PUBLIC

3

4

5

6

7

8
ALSD WINTER BREAK ENDS

9

10

11
*THE PLAY THAT
GOES WRONG*
7:30 PM

12
*THE PLAY THAT
GOES WRONG*
8:00 PM

13
*THE PLAY THAT
GOES WRONG*
8:00 PM

14
*THE PLAY THAT
GOES WRONG*
2:30 PM

15
MARTIN LUTHER KING JR. DAY
ALSD HOLIDAY

16
ACADEMY CLASSES BEGIN

17

18
*THE PLAY THAT
GOES WRONG*
7:30 PM

19
*THE PLAY THAT
GOES WRONG*
8:00 PM

20
*THE PLAY THAT
GOES WRONG*
8:00 PM

21
*THE PLAY THAT
GOES WRONG*
2:30 PM

22

23

24

25

26

27

28

29
RENT
BOX OFFICE OPENS:
MEMBERS

30

31

FOR TICKET INFORMATION, CALL OUR BOX OFFICE: **806.355.9991**
OR GO TO **www.amarillolittletheatre.org**



alt

The Father @ ALT - 2023

...the place
to be!





AD alt
VEN space
TURE

F E B R U A R Y 2 0 2 4

SUNDAY

MONDAY

TUESDAY

WEDNESDAY

THURSDAY

FRIDAY

SATURDAY

1

2

GROUNDHOG DAY

3

4

5

RENT
BOX OFFICE OPENS:
PUBLIC

6

7

8

9

10

11

12

13

14

VALENTINE'S DAY
ASH WEDNESDAY

15

RENT
7:30 PM

16

RENT
8:00 PM

ALSD HOLIDAY

17

RENT
8:00 PM

18

RENT
2:30 PM

19

PRESIDENTS' DAY
ALSD HOLIDAY

20

21

22

RENT
7:30 PM

23

RENT
8:00 PM

24

RENT
8:00 PM

25

RENT
2:30 PM

26

27

28

29

FOR TICKET INFORMATION, CALL OUR BOX OFFICE: **806.355.9991**

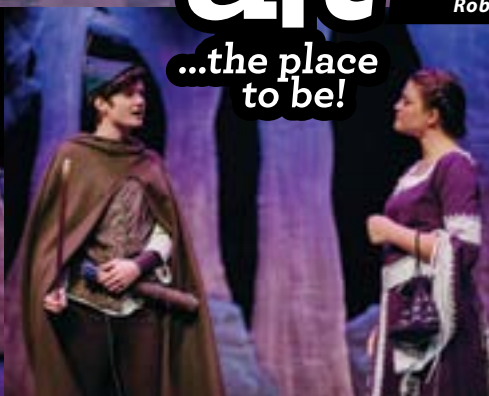
OR GO TO **www.amarillolittletheatre.org**



alt

Robin Hood @ ALT - 2022

...the place
to be!





#3

alt ★
main
stage

M A R C H 2 0 2 4

SUNDAY

MONDAY

TUESDAY

WEDNESDAY

THURSDAY

FRIDAY

SATURDAY

1

2

3

4

Academy #3
BOX OFFICE OPENS:
MEMBERS

5

6

7

8

9

10

DAYLIGHT SAVING TIME
BEGINS

11

Academy #3
BOX OFFICE OPENS:
PUBLIC

12

13

14

15

16

AI SD SPRING BREAK

17

ST. PATRICK'S DAY

18

19

20

21

22

ACADEMY #3
7:30 PM

23

ACADEMY #3
2:30 PM
7:30 PM

24

ACADEMY #3
2:30 PM

PALM SUNDAY

25

Sense and Sensibility
BOX OFFICE OPENS:
MEMBERS

26

27

28

ACADEMY #3
7:30 PM

29

ACADEMY #3
7:30 PM

GOOD FRIDAY
AI SD HOLIDAY

30

ACADEMY #3
2:30 PM
7:30 PM

31

EASTER SUNDAY

FOR TICKET INFORMATION, CALL OUR BOX OFFICE: **806.355.9991**

OR GO TO **www.amarillolittletheatre.org**

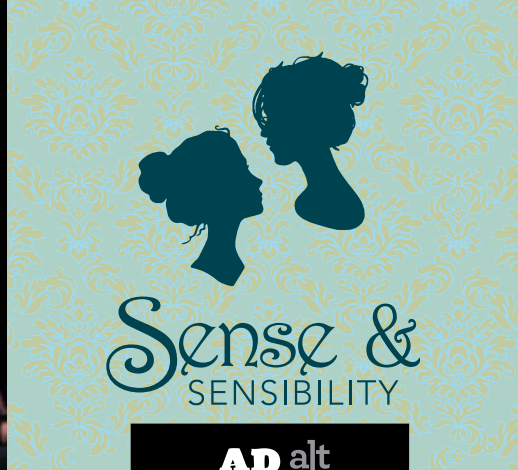


alt

These Shining Lives @ ALT - 2023

...the place
to be!

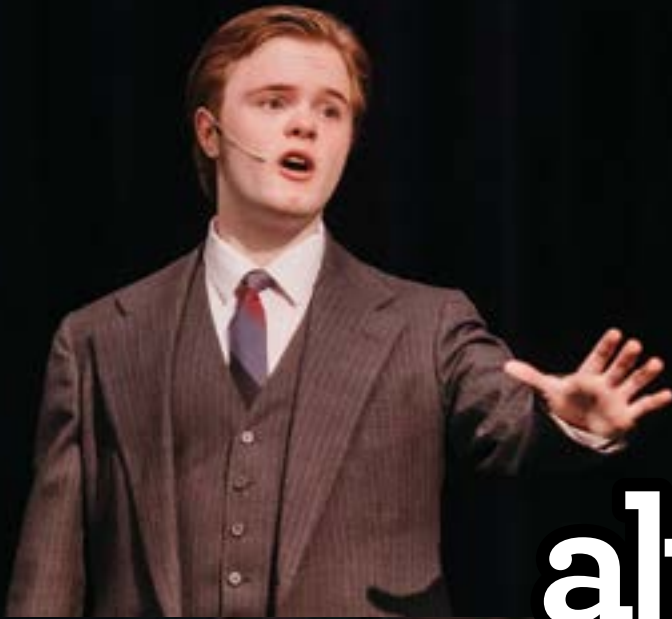




A P R I L 2 0 2 4

SUNDAY	MONDAY	TUESDAY	WEDNESDAY	THURSDAY	FRIDAY	SATURDAY
	1 APRIL FOOLS' DAY AISD HOLIDAY <i>Sense and Sensibility</i> BOX OFFICE OPENS: PUBLIC	2	3	4	5	6
7	8	9	10	11 <i>SENSE AND SENSIBILITY</i> 7:30 PM	12 <i>SENSE AND SENSIBILITY</i> 8:00 PM	13 <i>SENSE AND SENSIBILITY</i> 8:00 PM
14 <i>SENSE AND SENSIBILITY</i> 2:30 PM	15 <i>Spamalot</i> BOX OFFICE OPENS: MEMBERS	16	17	18 <i>SENSE AND SENSIBILITY</i> 7:30 PM	19 <i>SENSE AND SENSIBILITY</i> 8:00 PM	20 <i>SENSE AND SENSIBILITY</i> 8:00 PM
21 <i>SENSE AND SENSIBILITY</i> 2:30 PM	22 EARTH DAY <i>Spamalot</i> BOX OFFICE OPENS: PUBLIC	23	24	25	26	27
28	29	30				

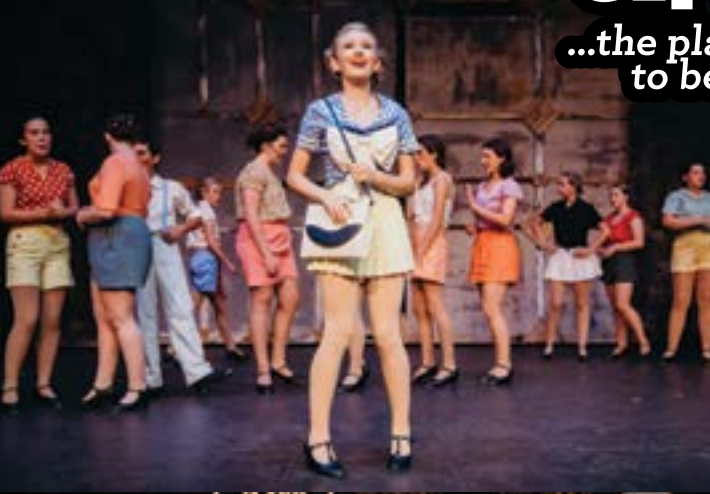
FOR TICKET INFORMATION, CALL OUR BOX OFFICE: **806.355.9991**
 OR GO TO **www.amarillolittletheatre.org**



alt

42nd Street @ ALT - 2022

...the place
to be!





MONTY PYTHON'S SPAMALOT™

alt ★
main
stage

M A Y 2 0 2 4

SUNDAY

MONDAY

TUESDAY

WEDNESDAY

THURSDAY

FRIDAY

SATURDAY

1

2

SPAMALOT
7:30 PM

3

SPAMALOT
8:00 PM

4

SPAMALOT
8:00 PM

5

6

7

8

9

SPAMALOT
7:30 PM

10

SPAMALOT
8:00 PM

11

SPAMALOT
8:00 PM

CINCO de MAYO

12

SPAMALOT
2:30 PM

13

SUMMER CLASS &
CAMP REGISTRATION
BEGINS

14

15

16

SPAMALOT
7:30 PM

17

SPAMALOT
8:00 PM

18

SPAMALOT
8:00 PM

MOTHER'S DAY

ACADEMY CLASSES END

19

SPAMALOT
2:30 PM

20

21

22

23

24

AISD ENDS

25

26

27

MEMORIAL DAY

28

29

30

DANCE RECITALS

alt ★
main
stage

31

DANCE RECITALS

alt ★
main
stage

FOR TICKET INFORMATION, CALL OUR BOX OFFICE: 806.355.9991

OR GO TO www.amarillolittletheatre.org



alt

Beautiful: The Carole King Musical @ ALT - 2023

**...the place
to be!**





DANCE RECITALS

alt ★
main
stage

J U N E 2 0 2 4

SUNDAY

MONDAY

TUESDAY

WEDNESDAY

THURSDAY

FRIDAY

SATURDAY

1

DANCE RECITALS

alt ★
main
stage

2

3

4

5

6

7

8

ALT SPECIAL EVENT
8:00 PM

alt ★
main
stage

9

10

11

12

13

14

15



FLAG DAY

16

FATHER'S DAY

17

18

19

20

21

22

ALT CELEBRATION
8:00 PM

alt ★
main
stage

23

24

25

26

27

28

29

30

FOR TICKET INFORMATION, CALL OUR BOX OFFICE: 806.355.9991
OR GO TO www.amarillolittletheatre.org

May/June 2023



Beautiful/Academy

July 2023



Cinderella - 2023

August 2023



Guys and Dolls - 2022

September 2023



Significant Other - 2022

October 2023



If/Then - 2023

November 2023



Clybourne Park - 2022

December 2023



Elf - 2022

January 2024



Clue - 2023

February 2024



The Father - 2023

March 2024



Robin Hood - 2022

April 2024



These Shining Lives - 2023

May 2024



42nd Street - 2022

June 2024



Beautiful: The Carole King Musical - 2023



ALT Calendar Cover 2023-2024 Season

Calendar Concept by Jason Crespin
Photos by Chriselda Reyes and Shaie Williams
Design & Printing by ColorArt, LLC

Amarillo Little Theatre - 2019 Civic Circle - Amarillo, TX 79109 - 806-355-9991
www.amarillolittletheatre.org